

Challenges and effects of structural change for people

**LEIPZIGER
NEUSEENLAND**



Situation at the beginning of the 1990s

Initiatives of departure - From doubt, courage and creativity of citizens, politicians, artists and architects.

Landscape change and tourism economy - where do we stand today?

Dr Gabriela Lantzsch, Mayor of Großpösna

Situation at the beginning of the 1990s

From miner to bogeyman

Villages that were to give way to mining

Mining and its consequences

Miners – who's more?



Source: NeuseenlandSammlung

Lignite refinement plant Espenhain, 1994



Source: NeuseenlandSammlung

The blasting of the Espenhain overburden conveyor bridge, 1997



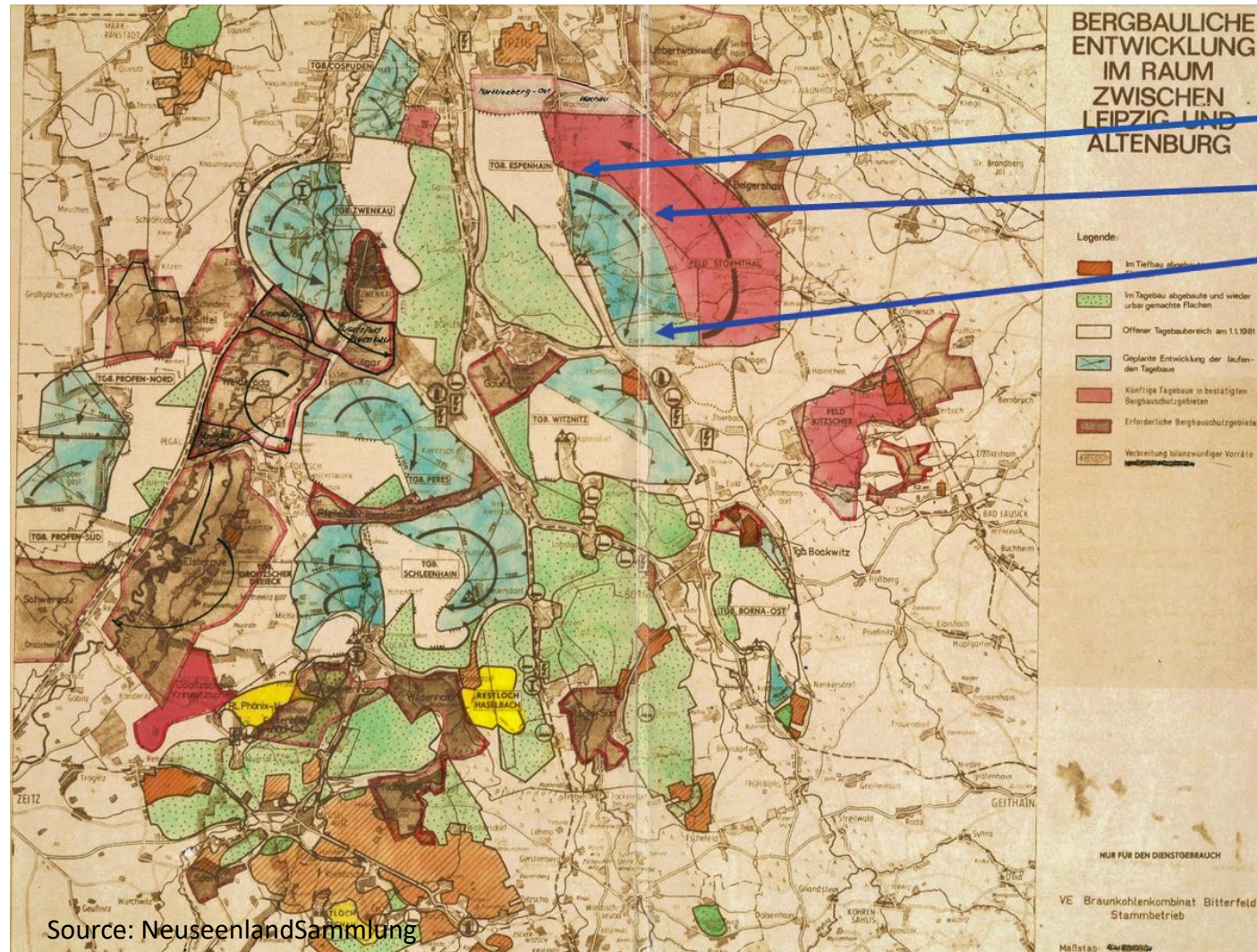
picture: LMBV



picture: LMBV

"The overburden conveyor bridge Espenhain, this technical masterpiece, was blown up in 1997. An estimated 5,000 people came to this blasting and many miners were shaken. You don't forget that for the rest of your life." *Karin Franke, research assistant at the lignite plant*

Planned open-cast mining 1983 "South area "



Güldengossa

Störmthal

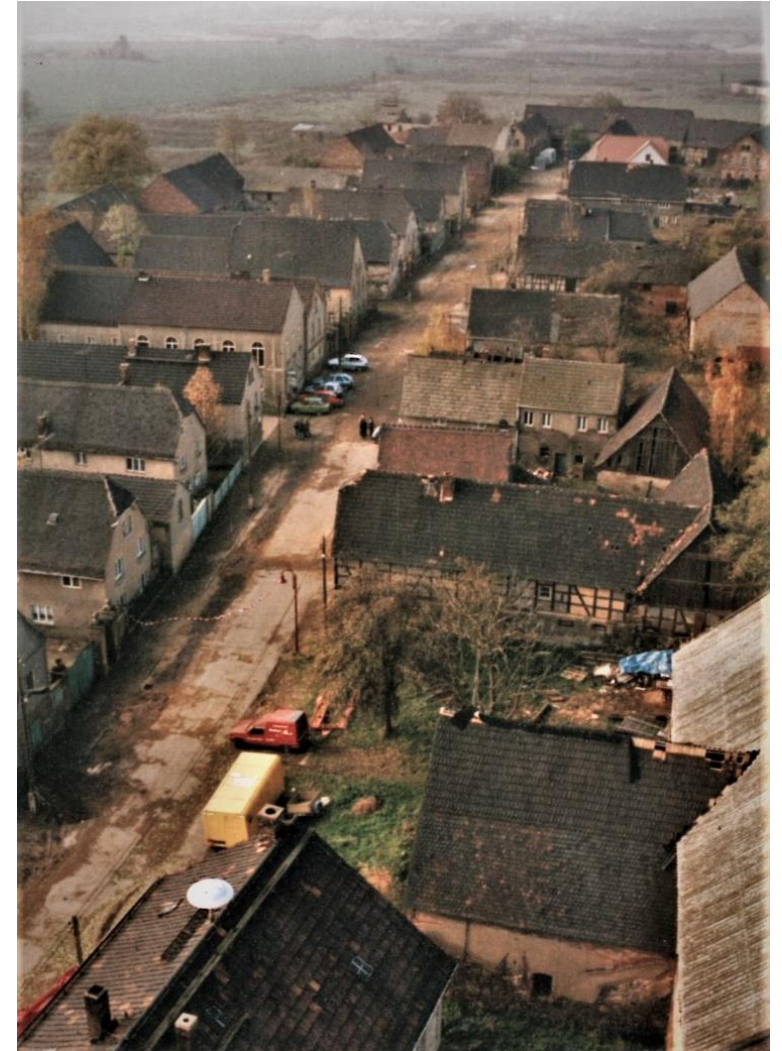
Dreiskau-Muckern

Source: NeuseenlandSammlung

Dreiskau-Muckern, at the beginning of the 1990s



All pictures: K.-D. Mai



Open cast mining and its consequences

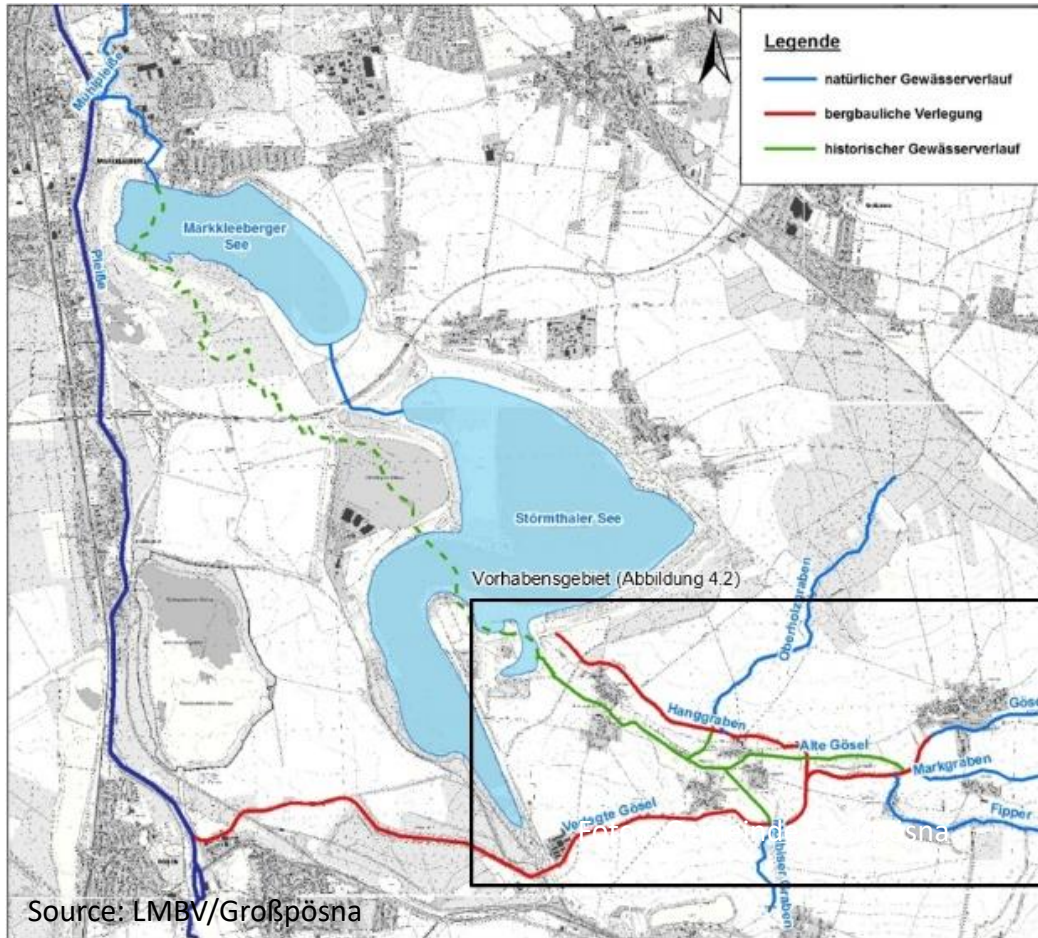


Espenhain open cast mine 1989



Piping of the Pleißemühlgraben in Leipzig

Open cast mining and its consequences

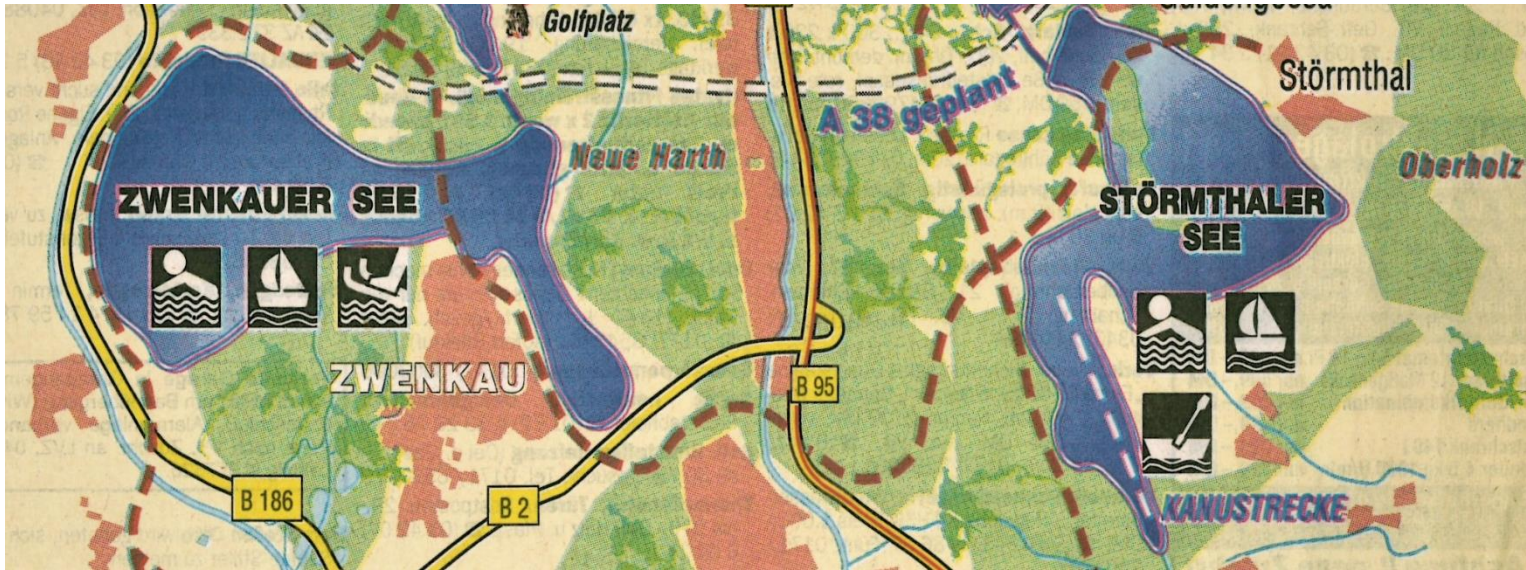


Old and new course of the river Gösel



The River Gösel seeks its way, 2010

From open-cast mining to lakes with unusual contours

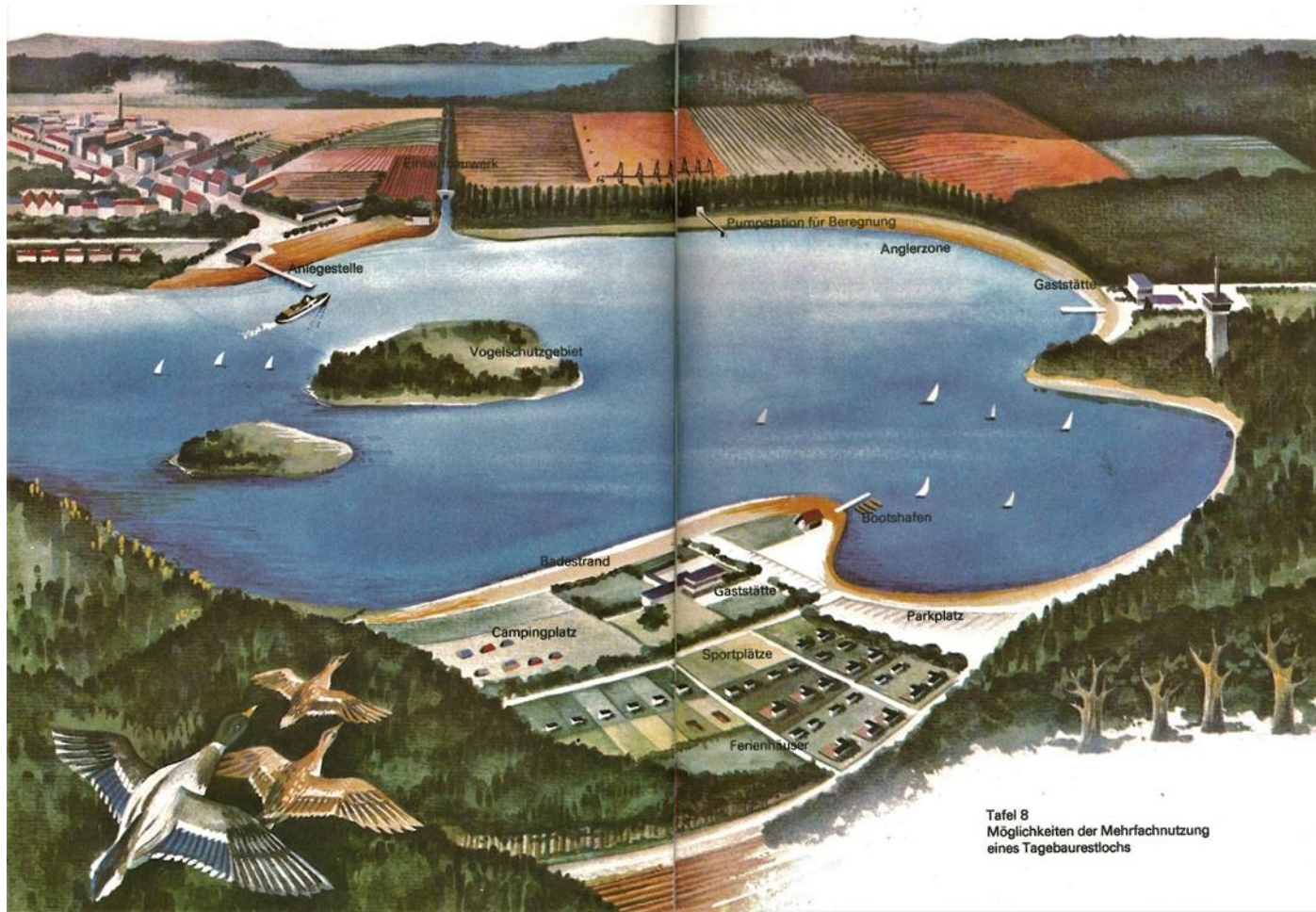


LVZ, 14.10.1999

LMBV



GDR-Planning, Landscape from the drawing board, 1981



It is therefore not surprising that the **structural change from lignite to recreation and tourism** should become a reality, following on from existing visions from GDR times.

Many agreed on this.

Initiatives of departure - Of doubt, courage and creativity of citizens, politicians, artists and architects.

Regional Conferences, 1991-1994

Green Ring Leipzig, 1996

Municipal Forum Southern Region Leipzig, 1996

"Art instead of coal", Landart project Bund Bildender Künstler Leipzig, 1999

Revival and revitalisation of villages - the example of Dreiskau-Muckern

3rd Regional Conference Southern Region Leipzig, 1994



Abb. 52: Michael Sorkin, New York – The lake scenery: lakes, islands, villages¹⁶⁰

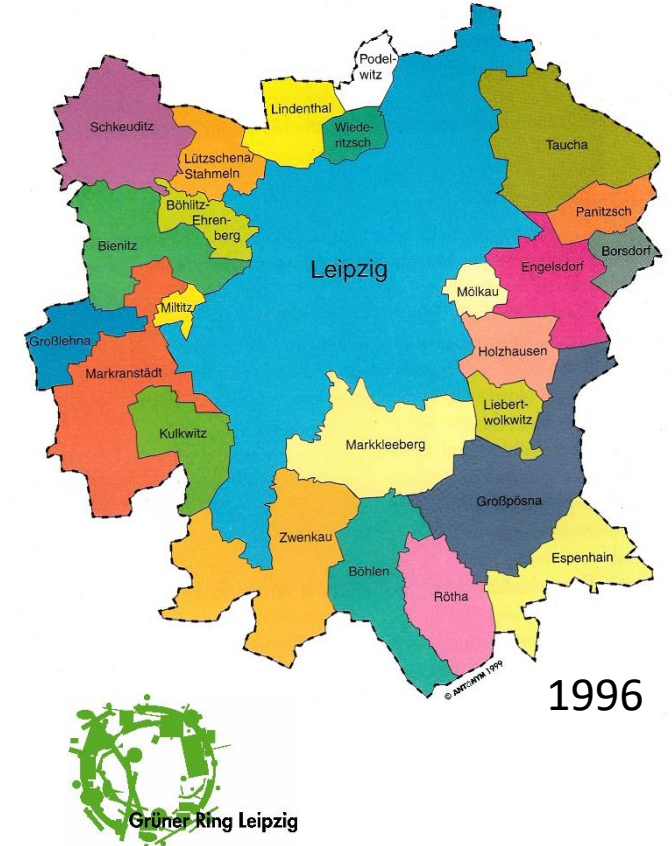
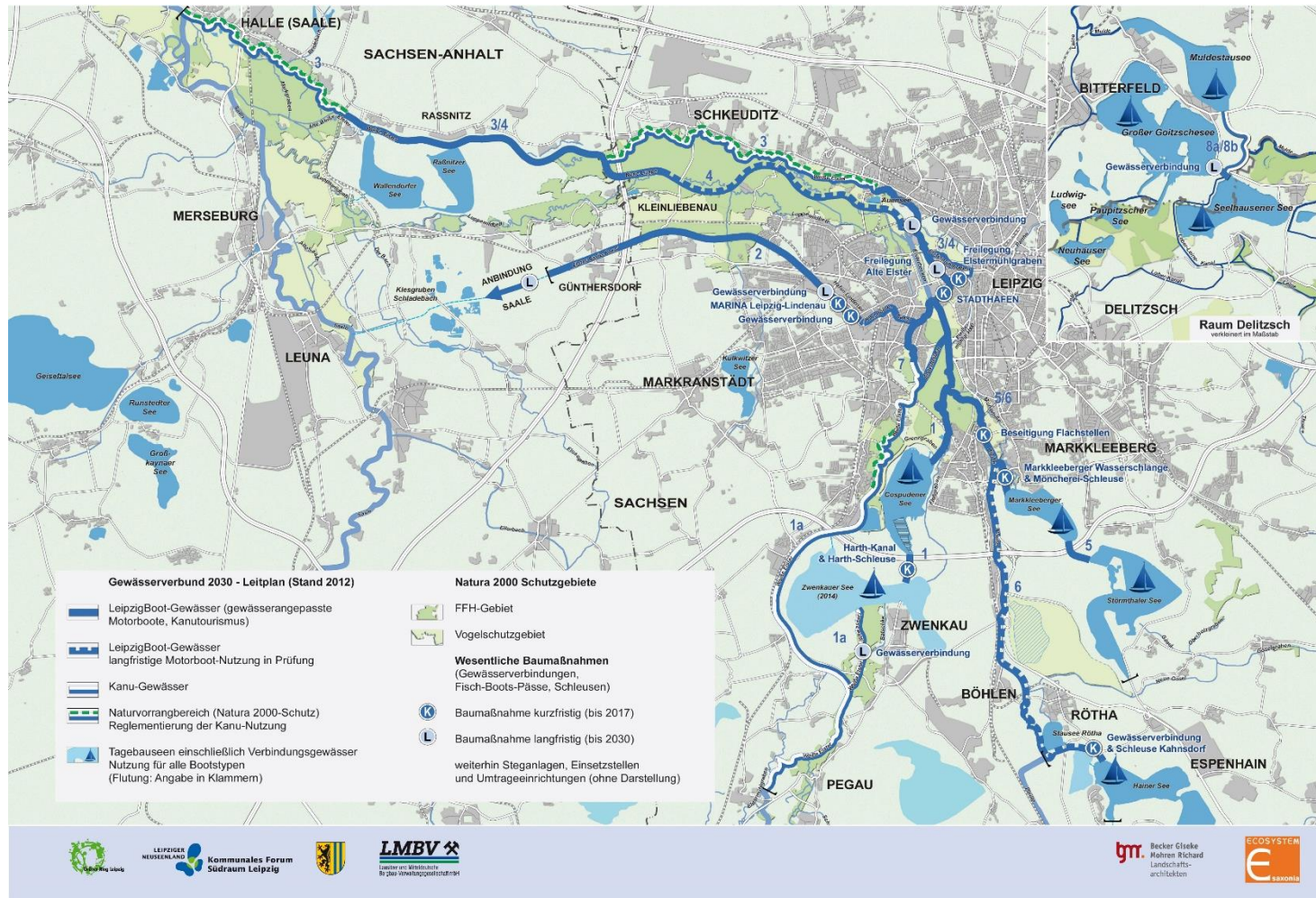
"There were persistent objections, both to the idea of opening up the piped mill ditches, as well as against the idea of an interconnected lake landscape."

*Walter C. Steinbach,
1994 Regional President*



Source: Booklet of Regional Conference 1994

Tourist Waterway Network Leipziger Neuseenland – master plan 2030

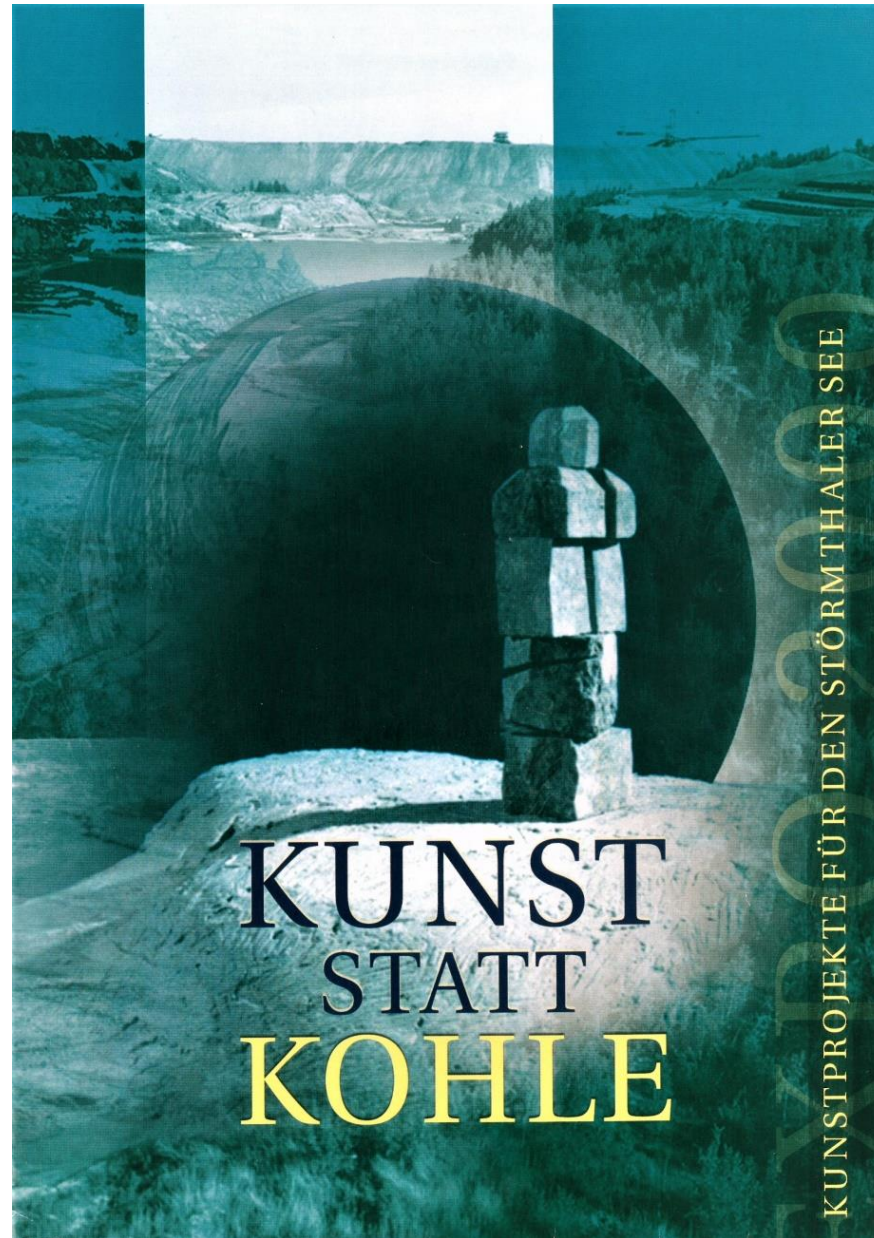


Kommunales Forum
Südraum Leipzig

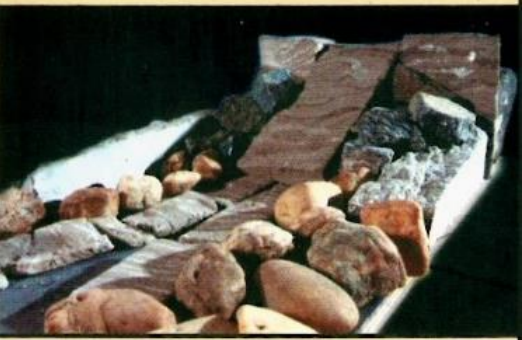
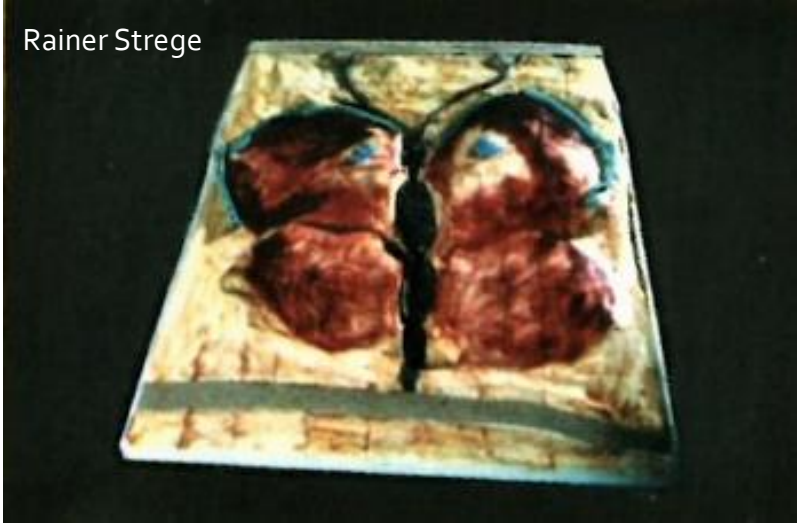
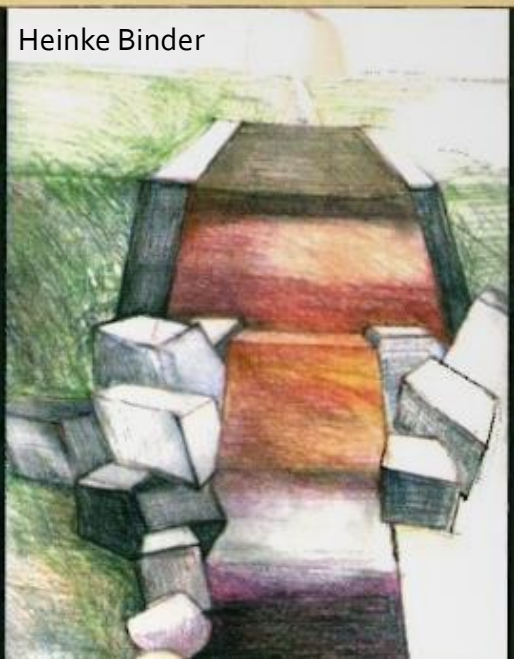
Landscaping for the north shore, Lake Störmthal 2001/2002



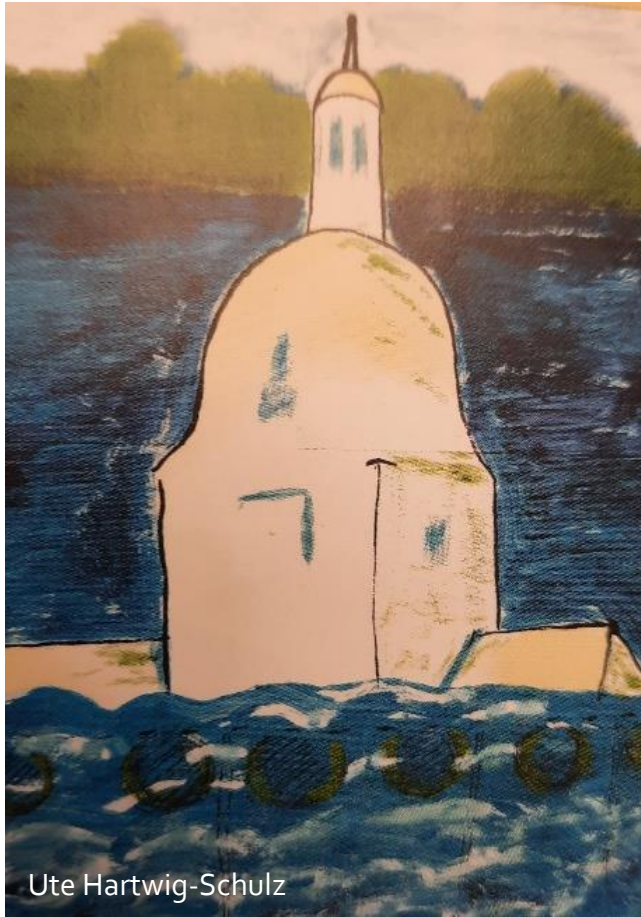
Landart project at lake Störmthal „Art instead of coal“, 1998



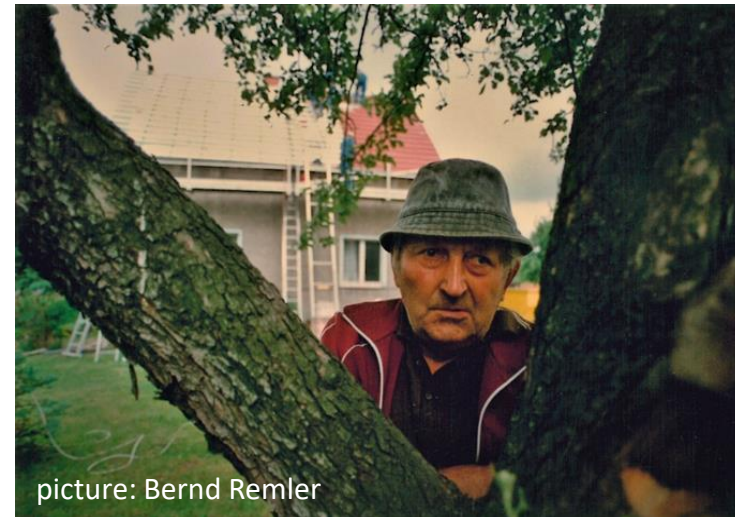
Landart project at lake Störmthal „Art instead of coal“, 1998



Art instead of coal: Vineta on lake Störmthal



Finally: The first red roof in Dreiskau-Muckern



EXPO 2000 "Dreiskau-Muckern: A village is looking for its population".



source: Südraumjournal 11

1988



source: Südraumjournal 11

2000

Landscape change and the tourism economy - where are we today?

From miner to sailor

Figures and pictures speak for themselves

From scrapping yard to mining technology park, approx. 20,000 visitors annually



"It's quite strange. The older you get, the less there is of your work, as if you had never been in the world. That's also the reason why I'm so involved in the Mining Technology Park." *Gerald Riedel, foreman for electrical maintenance in opencast mining*



Tourist Development

Large key settlements were necessary:

BELANTIS at Lake Cospuden (opened in 2003, approx. 600,000 visitors annually).



Tourist Development

Large key settlements were necessary:

Canoe Park at Lake Markkleeberg - opened in 2007, approx. 450,000 visitors per year.



Tourist Development

Large key settlements were necessary:

LAGOVIDA at Lake Störmthal - opened in 2014, approx. 50,000 guests annually



Tourist Development

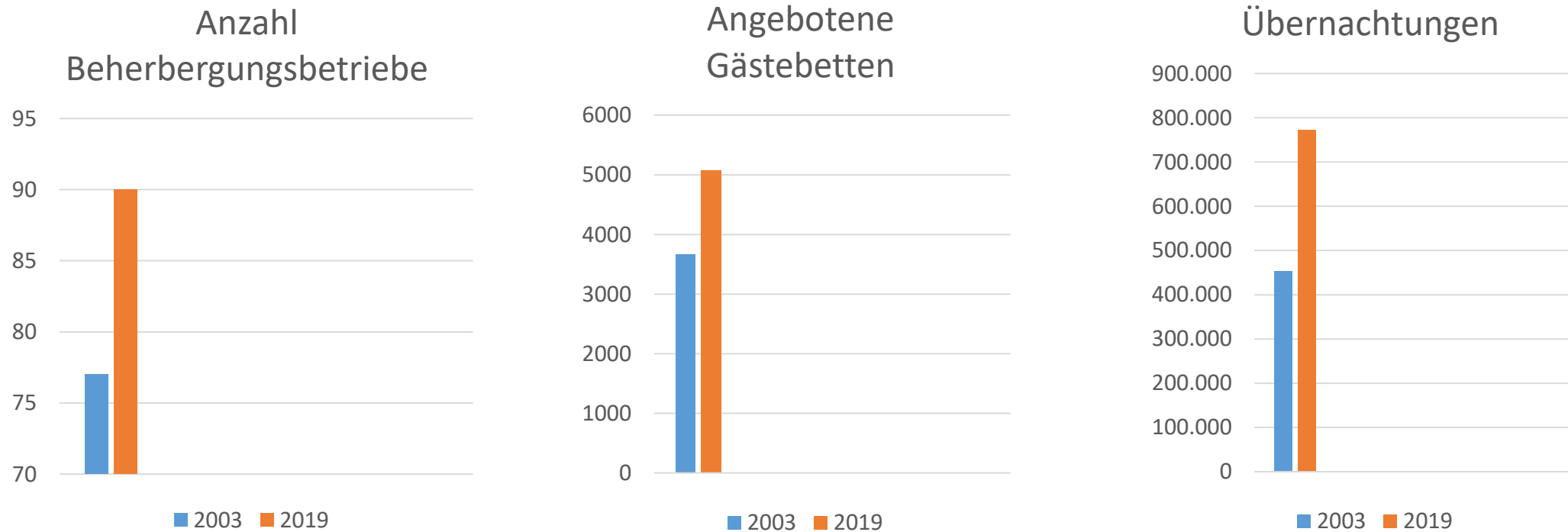


Fig. Development of tourism demand and supply in the Leipziger Neuseenland 2003-2019

For comparison: In 1996, there was only one accommodation establishment with more than 8 beds in the city of Markkleeberg; in 2019, there were 11 establishments in which 142,000 overnight stays took place.

Tourist Development

Tourism through entrepreneurial risk-taking:
Navigation in the Leipziger Neuseenland



"To this sandy wasteland should I bring ships?" *Wilfried Meyer, Meyer Shipping Company Markkleeberg*

Tourist Development

Today, tourism is an important economic and location factor in the Leipzig region:



Gross turnover 2019: > 627 million euros



Employment impact 2019:
approx. **15,290 jobs** in tourism

Tourist Development

Strengthen brand awareness - concert events on the waterfront:
Highfield Festival - since 2010, approx. 30,000 visitors annually



source: Gemeinde Großpösna

Tourist Development

Create tourism acceptance by organising regional events:
7 Lakes Hike - since 2004, approx. 5,000 active participants annually



source: Sportfreunde Neuseenland



source: Martin Ludewig

What lies ahead of us ?

And again we are in a structural change.

We absolutely have to use this push to get the "remaining work" done.

What is still missing:

Recreation offers for people with impairments

Development of the northern shore of Lake Zwenkau

Neuseenlandhaus

Further development of the waterway network !!!

Lake connections

Connecting Lake Markkleeberg with the Pleiße river

Saale-Leipzig Canal

See you in **LEIPZIGER
NEUSEENLAND**



Gabriela.Lantsch@grosspoesna.de
lantsch@gmx.de

